



Drive Alignment Guide

2100 / 9100 / 3100 – 2600 / 9600 Series

&

Printer Alignment Guide

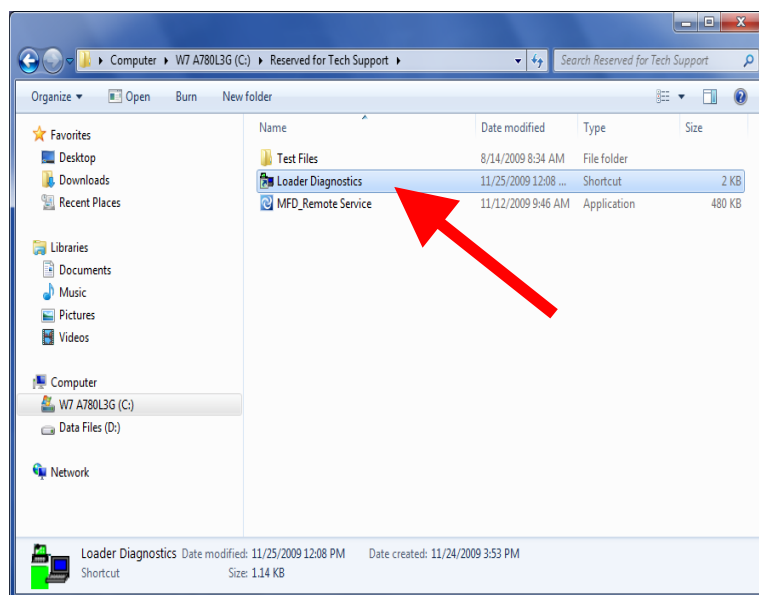
PicoJet – Prism Plus – P-55



Your MF Digital DVD / CD duplicator comes pre-aligned at the factory.

Note : If you're running the Scribe PC, Director, or SA Series (embedded) application, please terminate them first before double clicking the Loader Diagnostics icon.

Should you need to align it use this simple procedure via MF Digital's preset Loader Diagnostics located at: *C:/Reserved for Tech Support/Loader Diagnostics*



Command Set –

Note: Caps Lock MUST BE ON

C – Calibrate Autoloader

V – Confirm Firmware Version

LEFT SIDE DRIVES

Insert / Accept Commands
9600/2600 Series Only

Left Side Drive Trays

K – Insert disc to left side open tray

B – Accept disc from left side open drive tray

CTRL-P – Move disc toward back of left drive.

CTRL-Q – Move disc toward the front of drive

Special Picojet Commands Only

O – Insert disc on open PicoJet printer's tray

U – Accept disc from open PicoJet printer's tray

RIGHT SIDE DRIVES

Insert / Accept Commands
9100/2100/9600/2600 Series

Right Side Drive & Printer Trays

I – Insert disc to right side open tray

A – Accept disc from right side open tray

CTRL-S - Move disc toward back of drive & printer

CTRL-R – Move disc toward front of drive & printer

For purpose of orientation, as indicated by the picture to the right, Rear of the drive means towards to back (away from you). Front of the drive, means to the front (closer to you).

When aligning the drives, the disc should sit approximately between the 4 rectangular cut-outs in the tray. These are indicated by circles.



The picture to the right is a sample of what you are trying to accomplish.

As you will notice, the disc is approximately centered between the rectangular cut-outs.



Now that you have an idea, let's try a few commands that will align your drives.

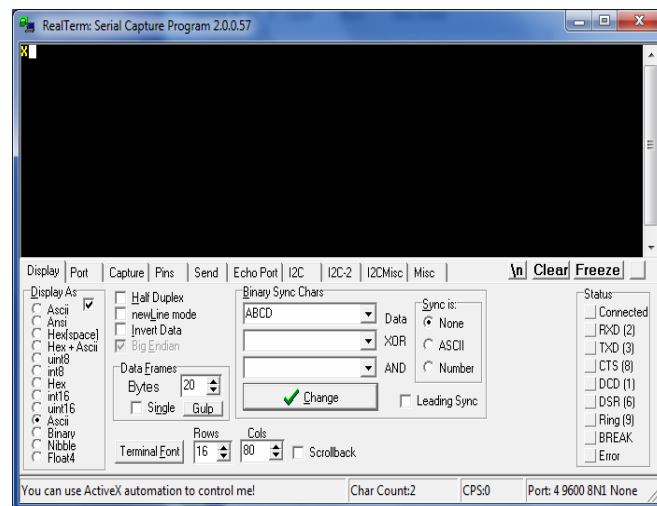
Let's make sure you have a connection, pressing the letter "C", will calibrate the Loader. When calibration is complete, an "X" appears indicating status is OK. You can also use the "C" command to clear an error if you make a mistake.

Put a few discs in the right side hopper. And open the right top drive in your machine. Pressing the letter "I" for insert, will instruct the machine to retrieve a disc, and place it into the open tray. For each successful command that is executed, an "X" will be displayed on the screen. Should an "E" appear, indicating an error, you can clear the error easily by pressing "C" again.

As shown to the right, the pick arm has placed the disc into the open tray. At this time you want to note the physical position of the disc in the tray. This picture shows the disc in the correct position.

Should your disc be placed, for example, to far forward (front of the drive). You would need to use the command CTRL-S. This is a two key combination. To execute this command, hold down the CTRL key and press "S". This command instructs the Loader to make a step towards the rear of the machine. The steps are small increments, therefore depending on how off the placement is, it may be necessary to repeat the same command.

Alternatively, if the disc was too far to the rear of the drive, the command CTRL-R should then be used. This would step the loader towards the front of the drive.



For every CTRL-S or CTRL-R you will receive a 2 digit code indicating a position.

Before going to test the alignment, make sure you press the letter “C” for calibrate. Then use the letter “I” for insert for drives on Right Side.

Should you need to further adjust the alignment, you can continue entering the CTRL-S or CTRL-R as needed.

This process would be repeated for the lower right side drive as well.

If you would like to instruct the loader to retrieve the disc from the open tray, press the letter “A”.

Aligning the Drives on the Left Side

If your drives on the left side need aligning, the process is identical. *Please refer to page 2 of this guide.* Simply utilize the left side commands in place of right side commands.

Insert / Accept (Left Side)

K – Insert disc to left side open tray
B – Accept disc from open drive tray

Alignment Commands (Left Side)

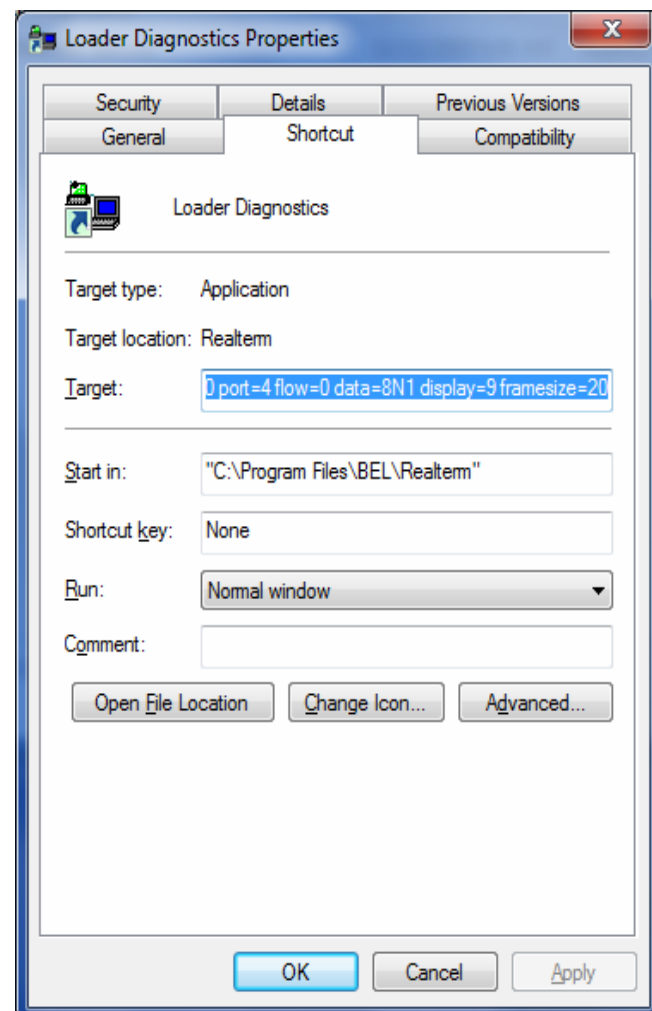
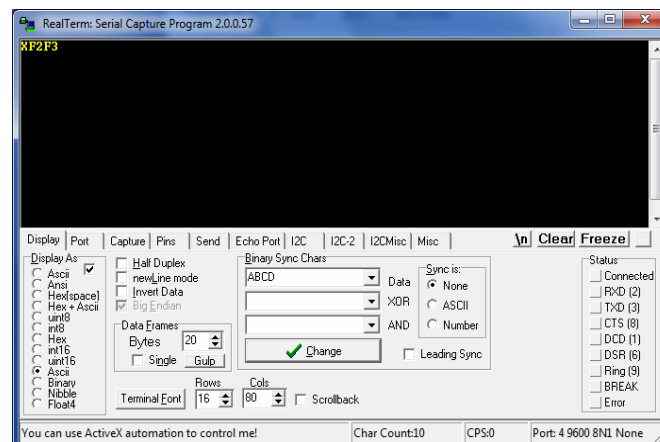
CTRL-P – Moves disc towards the back of drive.
CTRL-Q – Moves disc towards the front of drive

Note: Loader Diagnostics Shortcut

The loader diagnostics shortcut contains some additional information to make a connection to the COM port. See the screen to the right.

Should you accidentally delete the shortcut, the TARGET box requires the following string.

"C:\Program Files\BEL\Realterm\realterm.exe" -
baud=9600 port=4 flow=0 data=8N1 display=9
framesize=20



Printer Alignment

Sometimes it may be necessary to adjust the alignment of your printer. All MF Digital Printers mount to the right side. So using the CTRL-R / CTRL-S will assist you. Please keep in mind, if you adjust this alignment for your printer, you will affect the alignment for the right side drives. So a common placement needs to be assured when adjusting the printer alignment. We suggest that you check the inserting of your disc to the drive tray after aligning the printer.

Alignment Commands for Printers:

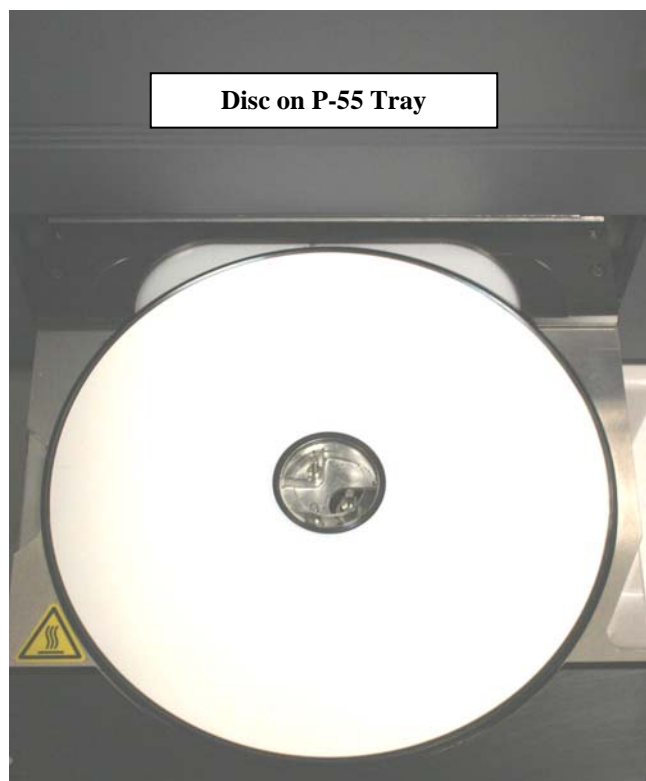
Prism Plus & P-55

I – Insert disc to open printer Tray

A – Accept disc from open printer tray

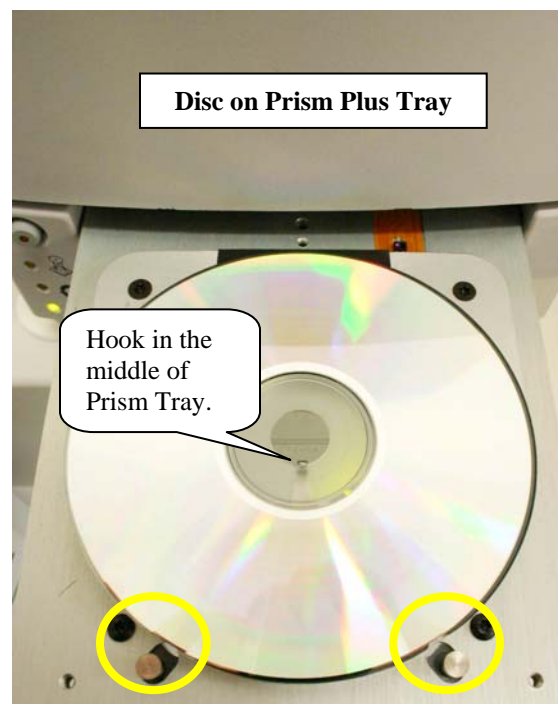
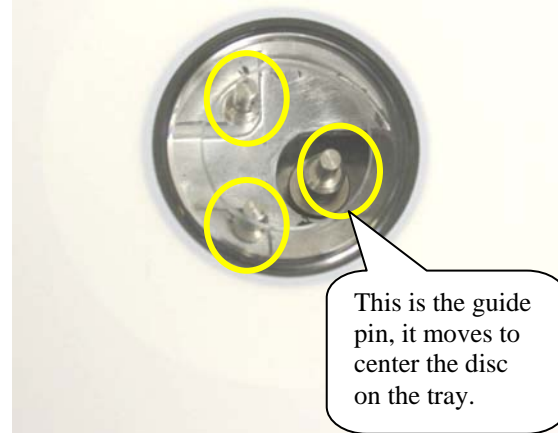
CTRL-R – Move disc toward front of printer's tray.

CTRL-S – Move disc toward back of printer's tray.



When aligning the P-55 Printer, the 3 points to consider are the 3 small pins in the middle of the tray. This disc is in perfect alignment. Please see **Picture #2** for a close up of the pins and how the disc should look on the tray.

Picture #2: Disc on P-55 Tray



The above picture shows a disc in perfect alignment on prism tray. When you align this printer, there are three points to consider.

1. Hook in the middle of the Printer's Tray.
2. The clamping pins on the outer perimeter of the disc pad, these pins move to center the disc on the pad, indicated by the circles.

When you have the disc on the Printer's Tray as shown above, the alignment is now correct. If an adjustment is needed, you can use the Alignment Commands for Prism Plus Printer.

The PicoJet 6000 is the easiest of all 3 printers to align. This is due to the design of the tray. You will find that the PicoJet 6000 Printer has a more “forgiving” tray space to align the discs.

When aligning the disc on PicoJet, there are 3 points to consider, the clamping bar, and the two white washers at the front of the tray.

As shown in the picture to the right, the disc is in perfect alignment as it has been placed between the 3 points indicated.

Should an adjustment be needed, use the commands listed below.

Please note, the Insert and Accept commands are different then that of the Prism Plus and P-55 Printers.

PicoJet 6000 Printer Alignment Commands

O – Insert disc on open printer’s tray

U – Accept disc from open printer’s tray

CTRL-R – Move disc towards front of printer’s tray.

CTRL-S – Move disc toward back of printer’s tray.

